

## eibNode features

### eibNode in networks

- Replacement of any area or line couplers
- NetID, for separating great plants into sub-plants
- Virtual group addresses
- Fast backbone with 10 Mbit/s
- Address state table
- NetBroadCast, for central calls
- Data record of the last 30 000 telegrams for e.g. analysis

### Open interfaces

- ActiveX component
- Library file for connection to Labview
- Open OPC 2 server software

### Functions and services

- Logic, Scenes, Delay, Repeater
- Week and year timer
- Staircase time switch
- Comparator, Hysteresis, Math
- Error message
- Filter

### Parameter software

To setup and parameterize *eibNode* the software *eibVision* is available. The software also includes a powerful editor for individual visualisations for PCs.

For more information: [www.bab-tec.de](http://www.bab-tec.de)

## eibPort features

b.a.b.-technologie GmbH

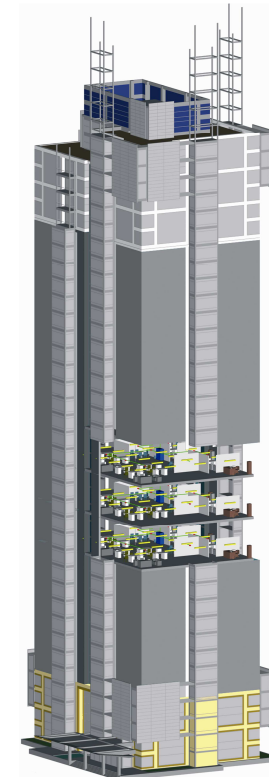
Heinrich-Hertz-Straße 4  
59423 Unna

Telefon: 0 23 03 – 96 24 96  
Telefax: 0 23 03 – 96 24 97

Internet: [www.bab-tec.de](http://www.bab-tec.de)  
E-Mail: [info@bab-tec.de](mailto:info@bab-tec.de)

**eibNode**  
LAN performance for EIB

## The intelligent gateway





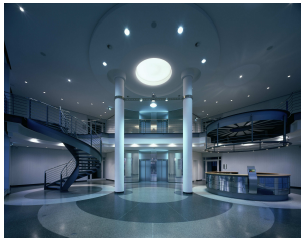
## eibNode – the intelligent gateway

*eibNode* is the solution for high speed data traffic, decentral intelligence and open interfaces for large-scale EIB plants. *eibNode* uses the advantages of the European Installation bus by adding decentral intelligence to the network. No central server is needed.



## High speed

Great EIB plants with hundreds of EIB devices and especially cyclic sending devices (e.g. temperatures) have a problem: data traffic jam because of the low bandwidth of the EIB. *eibNodes* can replace any EIB area or line coupler in existing plants and bring the fast backbone with 10 000 Bits per second to the EIB. You can place *eibNode* at specific positions in the EIB network where much data traffic occurs.



## Overview

Great EIB plants with thousands of group addresses are not easy to administrate clearly and sometimes even those 32 766 EIB addresses are not enough. With *eibNode* you can separate great EIB plants into small and easy administrable sub-plants. Even the same group addresses can exist in the different sub-plants. *eibNode* additionally supports further 32 768 virtual group addresses.

## Decentral intelligence

*eibNode* provides an amount of logic and time functions. All the functions are stored in *eibNode*. If one sub-plant is out of work for reasons of attendance for example the other sub-plants will go on working. *eibNode* includes the address state table which stores the last states of all group addresses. After rebooting *eibNode* all the last states are known immediately. A time-consuming initialization of all states is not needed.

## Open interfaces

With *eibNode* you connect an EIB plant to a variety of visualization and administration software. *eibNode* supports the Open OPC 2 server software from the company NETxAutomation – the stable connection to any compliant OPC software available. A connection to LabView is also possible. Or use the ActiveX component for your own applications.

## Flexible and multifunctional

Inserting *eibNode* in your EIB-network enables lots of network structures. Choose the best for your requirements. By the Broadcast function and the global group address function you can realize central calls. *eibNode* stores the last 30 000 EIB telegrams in a ring buffer. Data that e.g. indicates the energy consumption. But also data for the analysis of errors that occurred some time ago.

