

eibDesk features

general

- Up to 250 clients per eibPort
- All data stored in eibPort
- No configuration files on client PCs
- Individual operation panels

eibDesk editor

- Java application with minimum requirements*
- Easy handling
- Elements: Switch, Dimmer, Jalousie Control, Heating Control
- ETS data import
- Free naming of the elements
- Automatic documentation

eibDesk client

- Small Java application*
- Access by username and password

*The Java VM 5.0 is available for free.

For more information : www.bab-tec.de

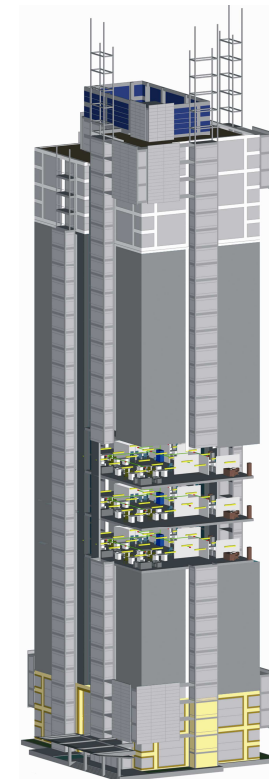
b.a.b.-technologie GmbH

Heinrich-Hertz-Straße 4
59423 Unna

Telefon: 0 23 03 – 96 24 96
Telefax: 0 23 03 – 96 24 97

Internet: www.bab-tec.de
E-Mail: info@bab-tec.de

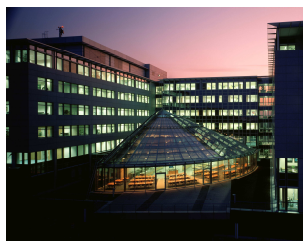
250 individual
operation panels



eibDesk – the Multifunction Switch

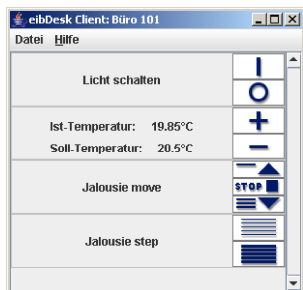
The *eibDesk*-software provides a Multifunction Switch Sensor for up to 250 clients with only one eibPort. Individual panels for each client can be created with the easily operable editor. The clients are small Java applications that do not require any additional software on the client devices.

Compare the *eibDesk* software with conventional switches and see that *eibDesk* is the better solution.



The solution for great buildings

Imagine a great office building with EIB plant. Each office needs switches for the lighting and the jalousies and a thermostat with display for the heating. Beyond this there are specific requirements like e.g. light scenes. With *eibDesk* each office gets its own individual software panel. The office functions can be easily extended or changed just by editing the software panel and creating e.g. new scenes in eibPort.

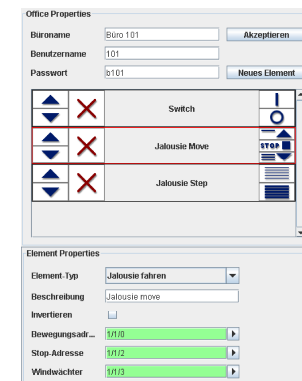


Individual operation panel

There are four types of elements to choose from. With switches you can switch the office lights or start a light scene in the show room for presentations. The dimmer allows creating certain atmospheres. The Jalousie Control supports moving the jalousie and the blades manually next to perhaps existing automatic functions. By the Heating Control you can change the set temperature and the current temperature is displayed.

Simple Editor

Creating new panels or changing existing ones is done by a few mouse clicks. Just add the required elements and assign the group addresses. There is also the possibility to import project data from the ETS which makes assigning the group addresses much easier. The editor is a small Java application with minimum requirements.



All data in eibPort

The data for up to 250 panels is stored centrally in one eibPort. There are no files on the office PCs. For displaying the panels there is just a small Java application needed. By input of username and password the panel receives the right information for an office. Without the need of further configurations practically every device with installed Client (PC, Laptop, PDA) can be used to control the room functions.



eibDesk network scheme

