



b.a.b-technologie gmbh

epSQL

Database reporting

Install and user manual

ja
17.06.2008
Stand 24.07.2008 11:06

EN

ver. 1.2

b.a.b – technologie gmbh

im INHOUSE Dortmund
Rosemeyerstr. 14
44139 Dortmund

info@bab-tec.de

Tel. +49 (0) 231 - 476 425 - 30

Fax. +49 (0) 231 - 476 425 - 59

Index of contents

Installation	5
Prearrangement	5
The esf-file.....	5
Create the esfp file.....	5
Differences between esf and esfp file	9
Usage.....	10
Start of epSQL.....	10
Login-window.....	10
hand over of esfp data	11
the dataselection.....	12
query of data.....	13
the export of CSV	14

Index of figures

illustration 1 esf-file import.....	6
illustration 2 Select esf File.....	6
illustration 3 allocate EIS types to group addresses.....	7
illustration 4 export esfp-file.....	8
illustration 5 esfp export.....	8
illustration 6 mySQL login-window.....	10
illustration 7 esfp import. Zuordnung SystemID to the eibPort serialnumber	11
illustration 8 selection of time or number of the telegramms	12
illustration 9 given informationfields (selection).....	13
illustration 10 results of a database query.....	14
illustration 11 the CSV files.....	15

epSQL

epSQL is a small tool for reading EIB raw data from a MySQL database, to convert and to show the data in a readable size.

The raw data are written by eibPort into the database. It is necessary to work up this raw data, cause they are non readable for the customer.

Installation

The installation of epSQL is done automatically by installing the "HomeInformationCenter" for MCE/phone.

Due the installation choose only the XAMPP installation (not the HIC-installation).

Prearrangement

2 steps are necessary:

1. generate a esf-file with the ETS (OPC-export)
2. generate with bab-tec Manager¹ a esfp-file (esf plus)

[HINT: BE SURE DATABASE CONNECTION BETWEEN EIBPORT AND MYSQL IS ENABLED \(HOMEINFORMATIONCENTER\)!](#)

The esf-file

The esf-file is to export from the ETS. Under menu „files“ choose „export“ and then „OPC-export“.

All group addresses connect to a communication object in the ETS and the corresponding identifier is exported to a so called esf-file. Store this file on your computer.

Unfortunately the esf-file has missing data. Not all EIS-types are exported. You can check the esf file with a simple text editor, with him you can open the esf-file. Group addresses are marked "uncertain". But this Information is basic for epSQL.

Create the esfp file

The esfp-file (esf+) is created with bab-tec Manager. Start the manager and import under „File“ und „Import“ the esf-file you stored before.

Illustration 1 shows the import window. Choose esf-import an click on „Next“ to proceed.

¹ Download at www.bab-tec.de

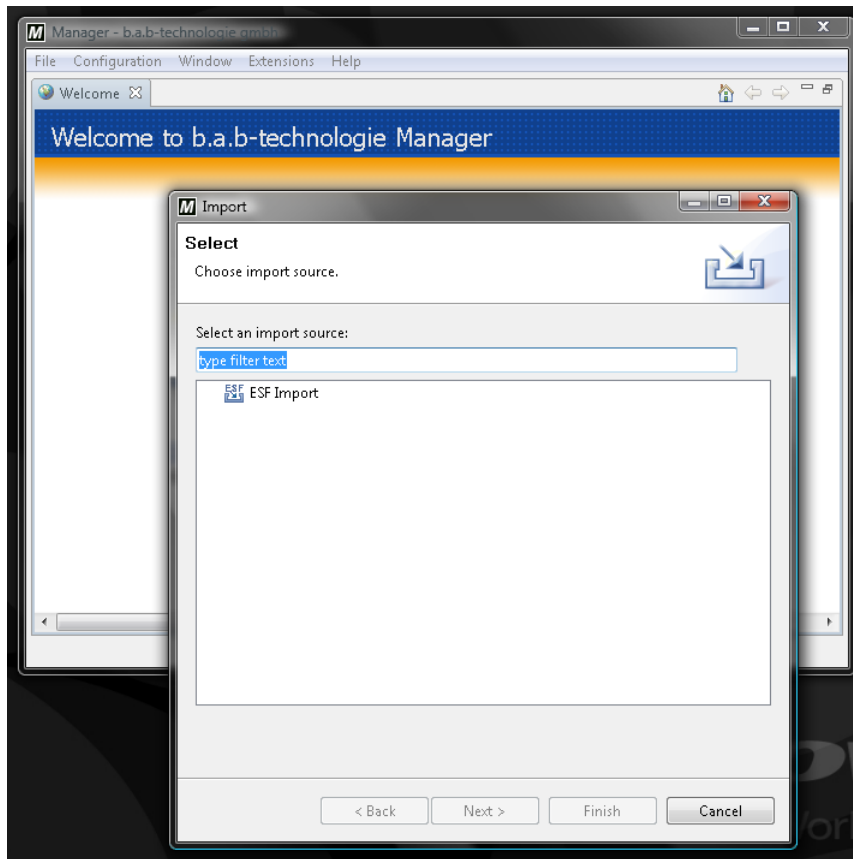


illustration 1 esf-file import

Illustration 2 Select the esf-file with „Browse“ and click „Finish“.

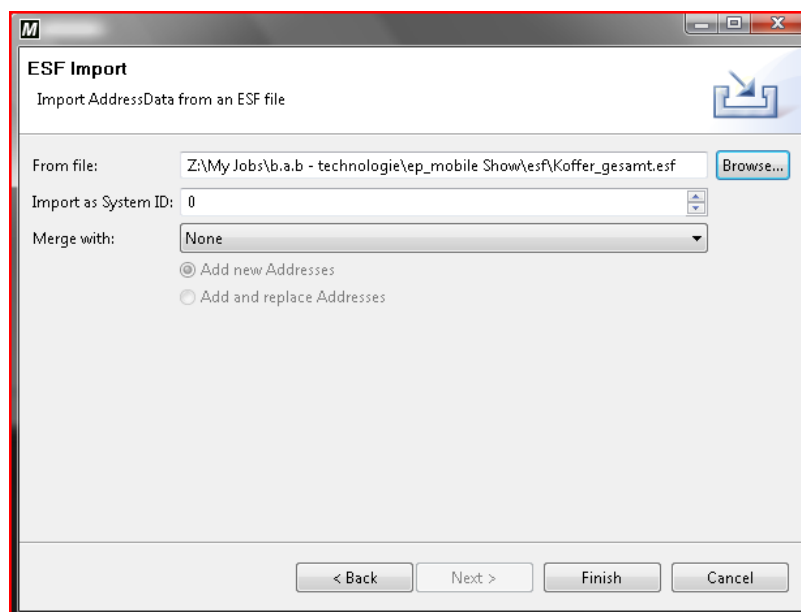


illustration 2 Select esf File

Afterwards watch the imported files under the perspective “device perspective” in menu item “window” and “open perspective” (only when they are not already shown).

In this perspective you got a survey of all group addresses and the associated EIS types. In this window the EIS type can be checked and if necessary revised. In illustration 3 EIS type 6 is allocated for group address 1/0/7. 1/0/7 was “undefined” like the group address 1/0/6.

THIS KIND OF ENTRIES HAVE TO BE REVISED.

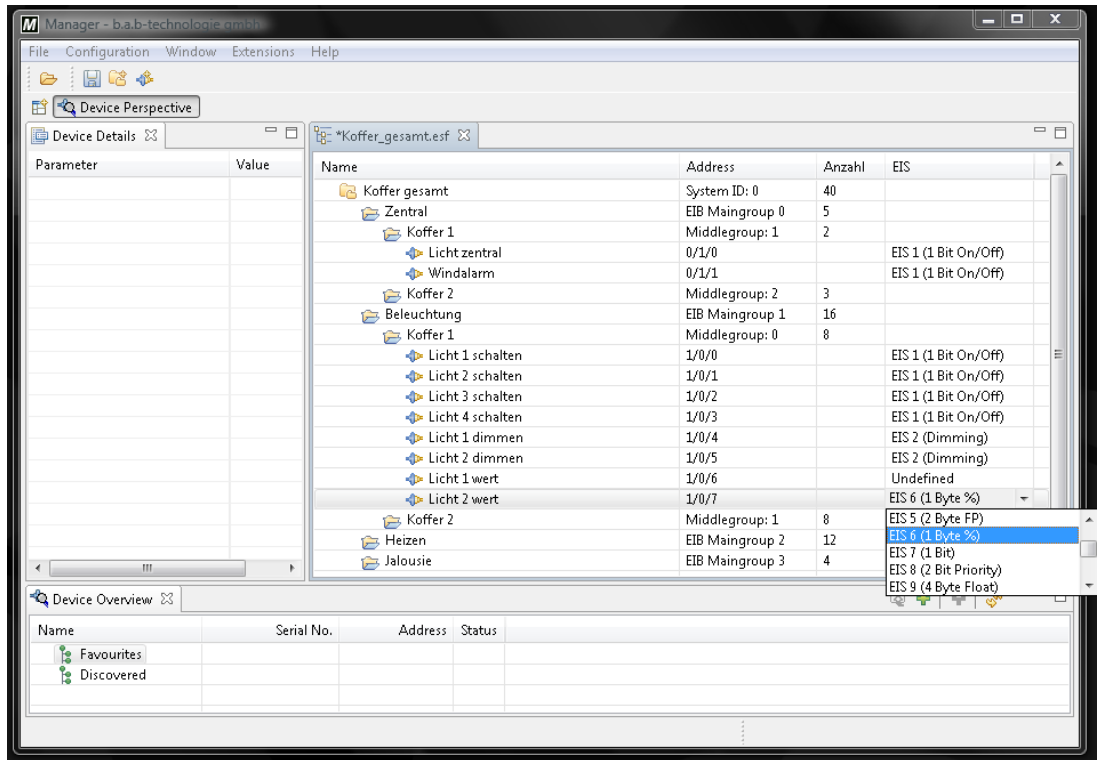


illustration 3 allocate EIS types to group addresses

To use epSQL in an acceptable way, all group addresses have to be allocated to the right EIS type.

When all group addresses have a valid EIS type, all files can be exported as esfp-file. The function “export” is selected under “file”. The filetype is “esfp”.

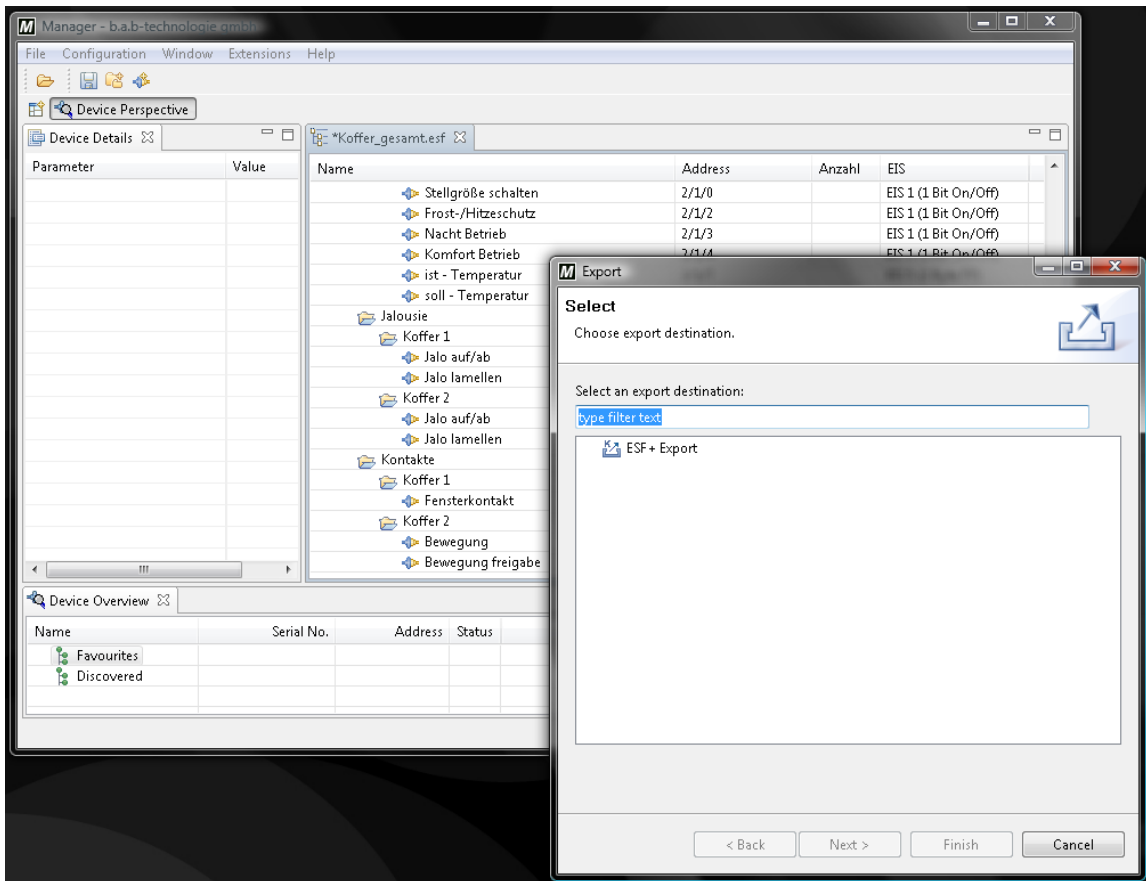


illustration 4 export esfp-file

A selection window to specify savingplace and name of the esfp-file, can be allocated by the button “choose”.

The esfp-file will be written when you touch the button “finish”.

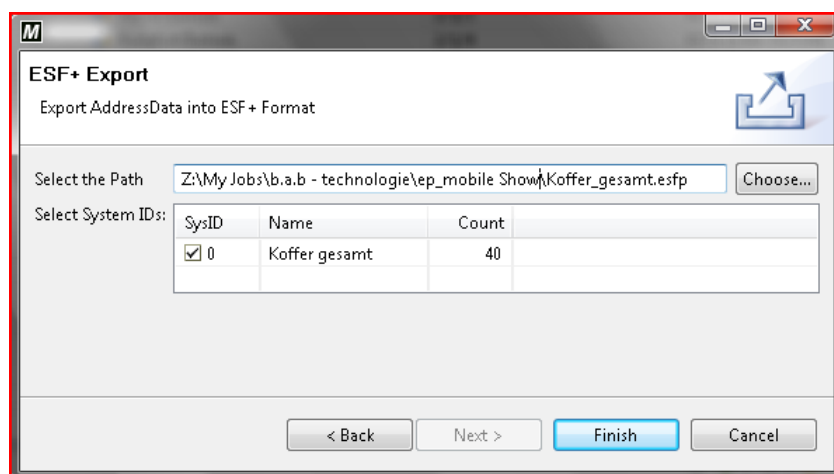


illustration 5 esfp export

This esfp file will be needed at first use or after changes in the EIB world.

Differences between esf and esfp file

As already mentioned before the right EIS type for each group address is needed for the evaluation of the row data from the database.

The ETS-export is not sufficient, because the description of the one, two or three byte values **are not** clear. This values are marked in the manager with „undefined“ and have to be additionally connected by the user with the right EIS-type.

Without a clear classification of the Eis-type to the respective group address a correct conversion of the files can not take place. To make a evaluation of the row data possible, epSQL does not use esf but esfp file. That means a reworked esf file with a complete definition of the EIS-types of all group addresses.

Usage

For the use of epSQL you only need a browser and an access to the database (username and password).

Start of epSQL

epSQL is an interactive website. It is started in the same way like HIC²-Visu.

Insert the IP-address of the webserver in the addressline of the browser, that was installed by the epSQL installation, that means the IP address of the PC where the installation took place. The path to epSQL is „/epSQL/index.php“. Therefore the whole link for epSQL evaluation is:

<http://<webserver>/epSQL/index.php>

If you are working with the same PC where the installation took place you can insert „localhost“ instead of the IP address.

Login-window

If you have called up the address of epSQL you are guided to a login-window (see illustration 6). Here you have to login with the userdata of the MySQL database. You can use the same logindata (user and password) as you already used in the ConfigTool of the eibPort. In addition the IP-address of the MySQL server and the name of the database are necessary for the login.

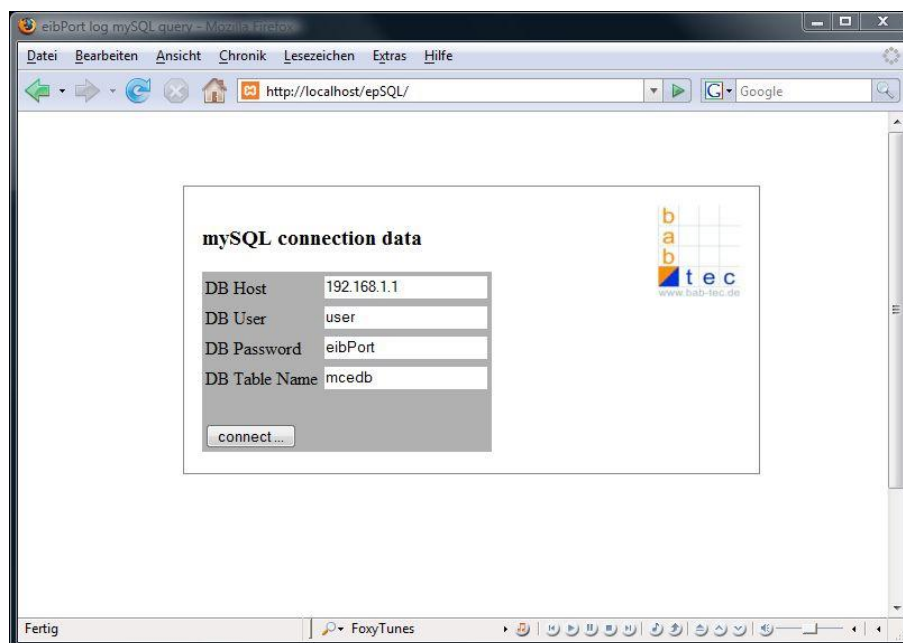


illustration 6 MySQL login-window

² HIC = HomeInformationCenter; more information at www.bab-tec.de

Hand over of esfp data

By the first use of epSQL (or the first access to a database where epSQL does not have access up to this point), you have to load the esfp file into the database. This happens automatically. You only have to indicate the link according to the constructed esfp file.

If the esfp files are missing you get a notice after login. In the field esfp data you can indicate the link of the file by the button “search”.

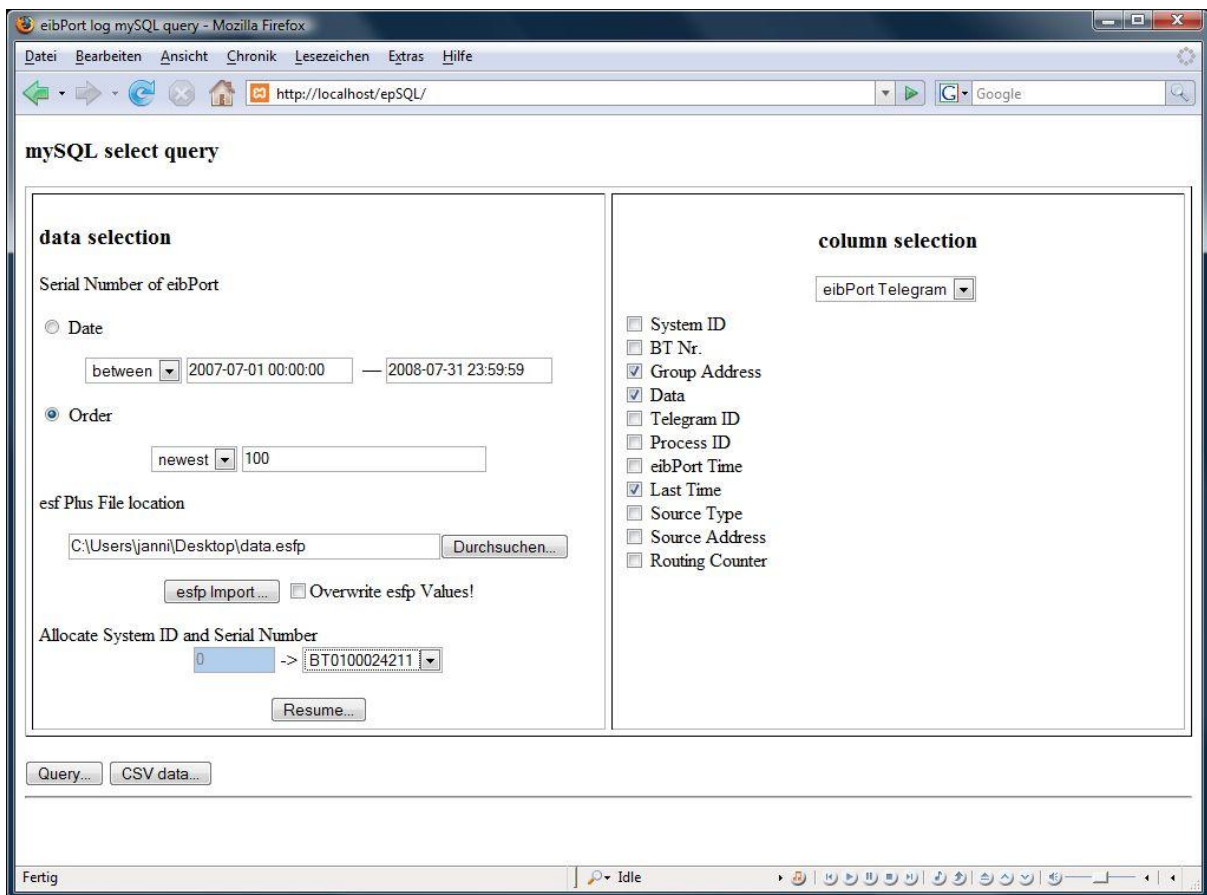


illustration 7 esfp import. Zuordnung SystemID to the eibPort serialnumber

After the esfp files is imported by the button „esfp Import ...“ the user has to assign a SystemID to the serialnumber of the eibPort.

According to the rule an eibPort writes into a database. In this case the assignment is easy. (see illustration 7)

There are as well facilities where more than one eibPort write into a database. The chance that the same group addresses appear several times is very high in this case. To allocate these group addresses to the right eibPort (and the right EIB world) they get equipped with a SystemID.

The dataselection

As you can see in the illustration 7 the dataselection is divided into two groups.

1. Selction of time or number (left side),
2. Selection of datatypes (right side).

illustration 8 selection of time or number of the telegramms

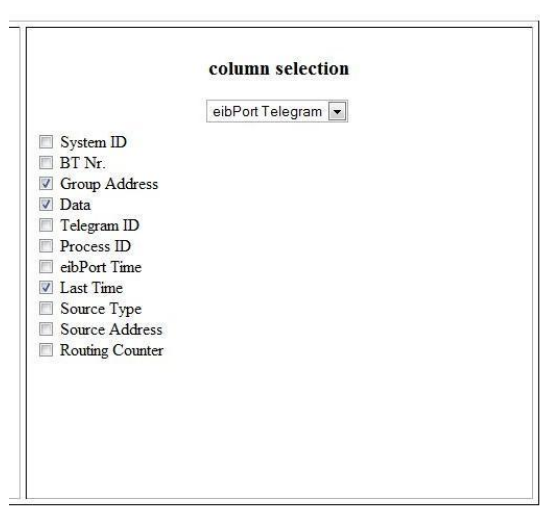
At the left side the user can contain the data according to time and number. For time the following criteria are possible:

- a. The record can be called up according to the following date-criterias: **staring date, up to date** and **from – to date**
- b. Or according to the number of records. That means calling up of the **oldest X** or **newest X** records.

The right side offers the selection of data. The evaluation is made by the choicebox. There is a choice of the following tables:

- a. **EIB telegramms,**
- b. **Status-telegramms,** and
- c. **Log-telegramms.**

These different “tables” differentiate only by different information. You can activate or deactivate the informationcontent of the tables by the list of choiceboxes underneath. So you choose which information are selected from the database and which information are not selected.



column selection

eibPort Telegram ▾

- System ID
- BT Nr.
- Group Address
- Data
- Telegram ID
- Process ID
- eibPort Time
- Last Time
- Source Type
- Source Address
- Routing Counter

illustration 9 given informationfields (selection)

Query of data

When you have chosen the criteria you can query the data base. Apply the button („Query“) who sends the query to the database.

The query contain items, the data listed under the horizontal line in a table. See the following illustration 10 which shows the result of a query. The last ten records were queried.

mySQL select query

data selection

Serial Number of eibPort

Date

between 2007-07-01 00:00:00 — 2008-07-31 23:59:59

Order

newest 10

esf Plus File location

C:\Users\janni\Desktop\data.esfp

Overwrite esf Values!

Allocate System ID and Serial Number

0 -> BT0100024211

column selection

eibPort Telegram

- System ID
- BT Nr.
- Group Address
- Data
- Telegram ID
- Process ID
- eibPort Time
- Last Time
- Source Type
- Source Address
- Routing Counter

ID	Group Address	Data	EIS Type	Last Time
127207	17/1969	7	EIS UNDEF	2008-02-27 18:02:13
127206	0/250	7	EIS UNDEF	2008-02-27 18:02:13
127205	0/255	1	EIS UNDEF	2008-02-27 18:02:13
127204	3/1787	1	EIS UNDEF	2008-02-27 18:02:13
127203	3/1788	1	EIS UNDEF	2008-02-27 18:02:10
127202	0/1545	0	EIS UNDEF	2008-02-27 18:02:09
127201	16/250	7	EIS UNDEF	2008-02-27 18:02:06
127200	16/250	7	EIS UNDEF	2008-02-27 18:01:56
127199	8/1911	0	EIS UNDEF	2008-02-27 18:01:55
127198	3/1537	0	EIS UNDEF	2008-02-27 18:01:51

illustration 10 results of a database query

The export of CSV

The queried data from the database can be as well exported in CSV format. The CSV data can be created by the button „CSV data ...“. After the start of the export function the data that are listed are shown in at a new page in CSV format. You can mark, copy and save the data in a file.

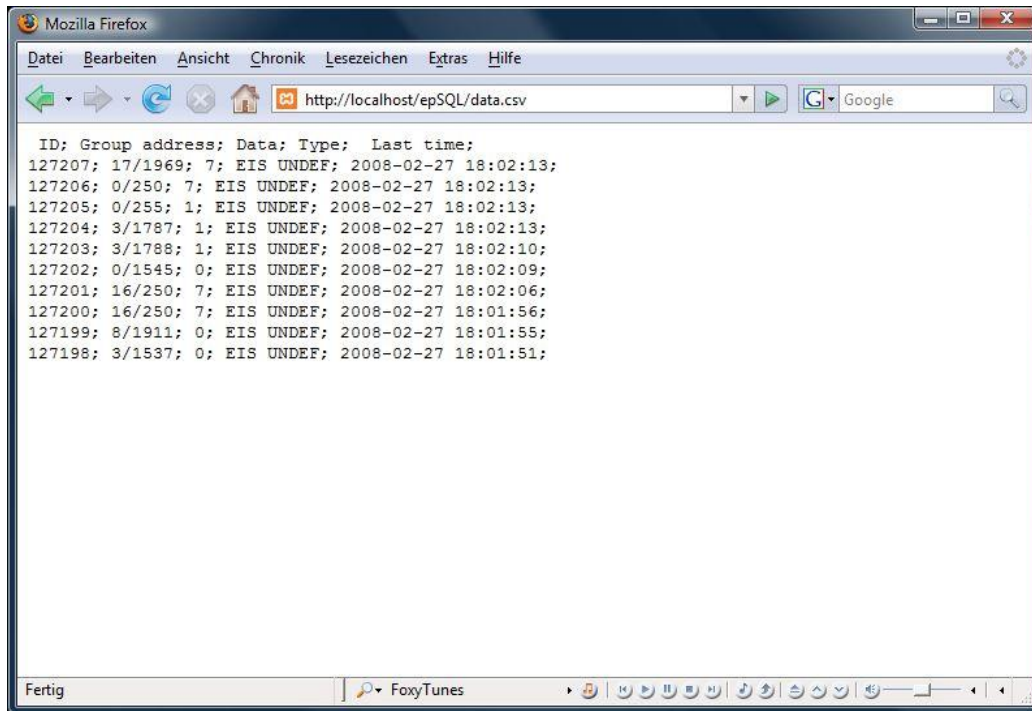


illustration 11 the CSV files

The CSV file can be processed. With Microsoft© Excel for example you can make evaluation and analyses.

TIP: IF YOU WORK WITH MICROSOFT INTERNET EXPLORER THE NEW DATA ARE NOT LISTED ON A NEW PAGE BUT YOU GET QUESTIONED IF YOU WANT TO SAVE DATA AS CSV FILE OR OPEN IT DIRECTLY WITH MICROSOFT EXCEL.



b.a.b – technologie gmbh

im INHOUSE Dortmund
Rosemeyerstr. 14
44139 Dortmund

info@bab-tec.de

Tel. +49 (0) 231 - 476 425 - 30
Fax. +49 (0) 231 - 476 425 - 59