



b.a.b-technologie gmbh

HomeInformationCenter2

eibPort Integration in MCE/iPhone

configuration manual

ja
30.06.2008
Stand 19.06.2009 14:18

EN

ver. 1.0

b.a.b – technologie gmbh

INHOUSE Dortmund
Rosemeyerstr. 14
44139 Dortmund

info@bab-tec.de

Tel. (0231) 476 425 - 30
Fax. (0231) 476 425 - 59

Index of contents

1. Overview.....	6
1.1 eibPort.....	6
1.2 Client.....	6
2. Configuration.....	7
2.1 Upload license file.....	7
2.2 Create HIC project.....	9
2.2.1 Structure of the HomeInformationCenter.....	9
2.2.2 HomeInformationCenter Editor.....	9
2.2.3 Available element types.....	12
3. Function test.....	13
3.1 Start HIC. The HIC start page.....	13
3.1.1 Start HIC with QR Codes.....	14

Index of figures

Figure 1 Overview	6
Figure 2 ConfigTool license upload 1	8
Figure 3 ConfigTool license upload 2	8
Figure 4 HomeInformationCenter Editor.....	10
Figure 5 HomeInformationCenter Editor, example Visu	11
Figure 6 HIC start page.....	13

HomelInformationCenter

The HomelInformationCenter (HIC) describes the linking of the eibPort to the Windows Media Center (MCE), PDAs, mobiles and iPhone/iPod touch. With HIC you can comfortable turn on the lighting, heating, regulate temperatures, show values and camera pictures on your television, PC, PDA, mobiles, iPhone or iPod touch.



The whole configuration and installation will be described Step by Step by this instruction.

1. Overview

The integration of the eibPort visualization into the Windows Media Center (or mobiles) is served direct from the eibPort. Only the eibPort has to be configured.

The following illustration shows the overview of the HIC.

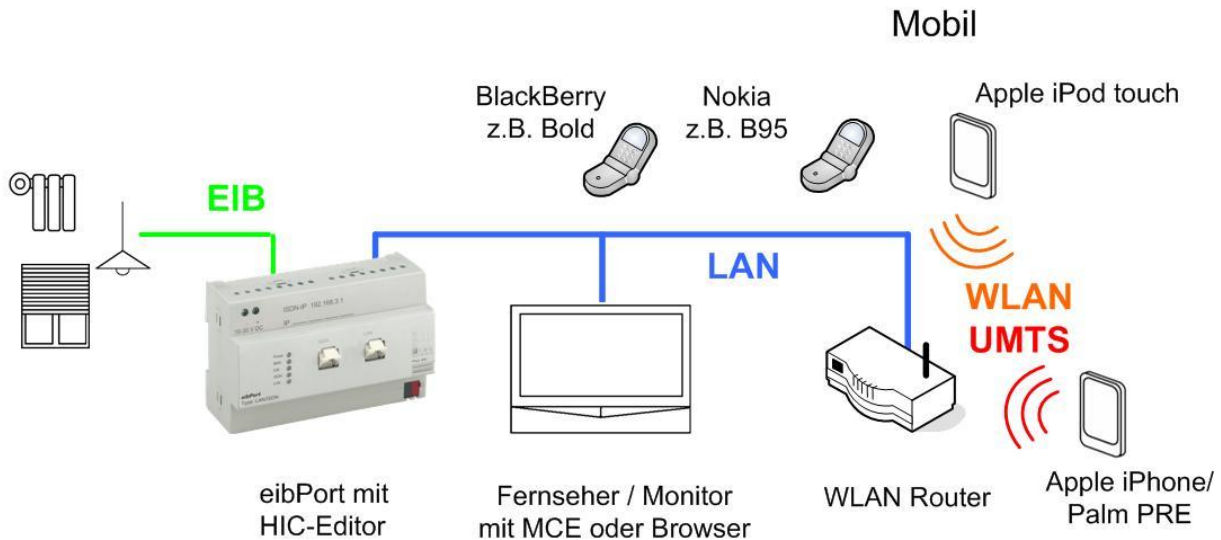


Figure 1 Overview

1.1 eibPort

The eibPort keeps the connection to the EIB and get the states of the EIB objects. With this information the eibPort kept "up to date" the states of the visualization objects on the HIC visualization.

The HIC visualization for the clients (MCE, PDA, mobiles, iPod touch / iPhone ...) is provided by the eibPort web server. The web server receives the data about the project from the eibPort. The projection of the HIC visualization takes place in the editor of the eibPorts.

THE EIBPORT HAS TO CONTAIN VERSION > 0.8.5. IF THIS IS NOT THE CASE AN UPDATE HAS TO BE MADE FIRST OF ALL.

1.2 Client

As clients the Windows Media Center, PDAs, iPhone / iPod touch (Safari), or mobile phones with an installed JavaScript browser can be used. More than one client can get access to the eibPort.

The connection is possible via the local area network (LAN and WLAN) and via the wide area network WAN (Internet, DSL, UMTS ...).

2. Configuration

There are two steps necessary for the configuration of the HomelInformationCenter:

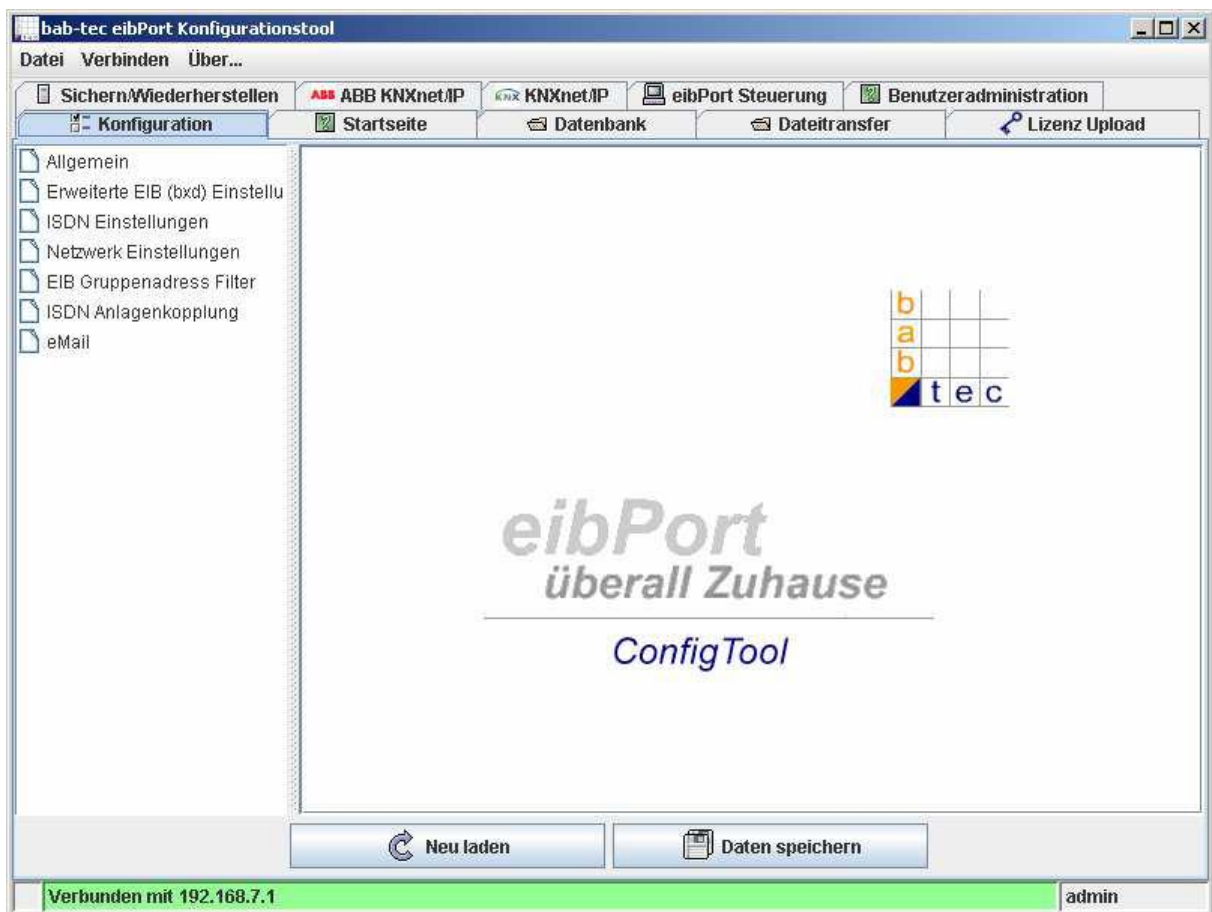
1. Upload license file in the eibPort (upload license file)
2. Create a HomelInformationCenter visualization project (create HIC project)

2.1 Upload license file

To use the HomelInformationCenter, a valid license file has to be load into the eibPort.

The HomelInformationCenter license file can be ordered direct from b.a.b-technologie gmbh. The HomelInformationCenter license file must be uploaded with the ConfigTool in the eibPort.

For this, get connected with the eibPort (write the IP address of the eibPort in the address line of a web browser) and call via the button "**system**" the ConfigTool. After the check of the SSH key and of the username / password the ConfigTool starts.



TIP:

IF YOU DO NOT UPLOAD A LICENSE PLEASE CONTACT US. WE OFFER YOU A TEST LICENSE. (EMAIL AT INFO@BAB-TEC.DE)

In the ConfigTool choose the tab "license upload".

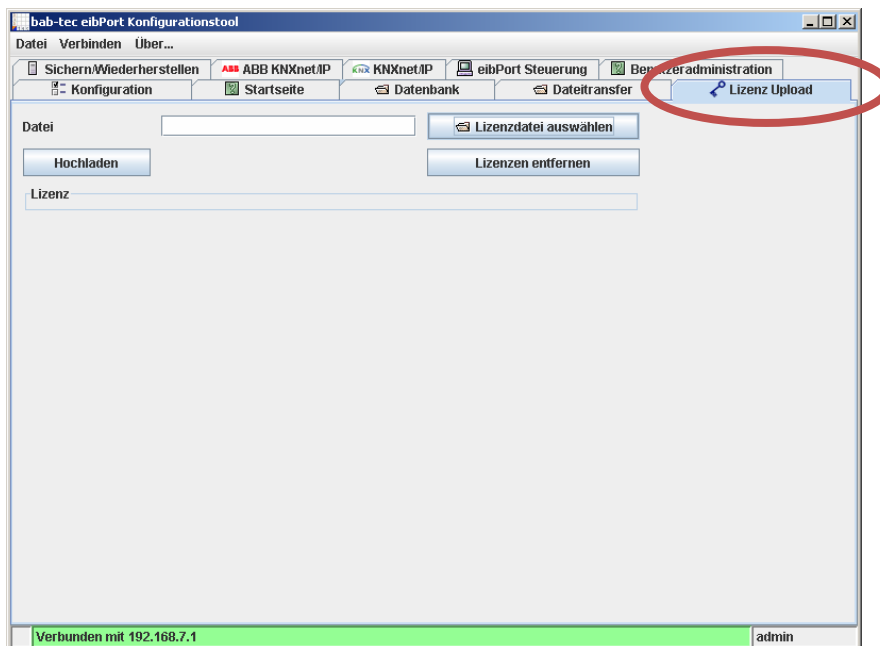


Figure 2 ConfigTool license upload 1

Click at "choose license". In the following file dialog give in the path to the license file and choose it with "open". For installation of the license click "upload".

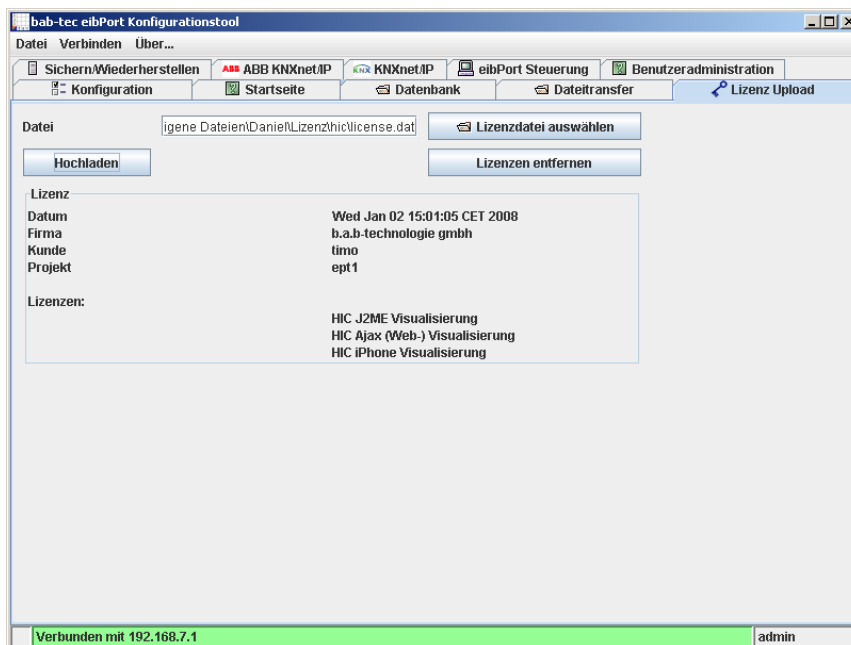


Figure 3 ConfigTool license upload 2

Now the HIC is licensed at this eibPort and can be used.

THE LICENSE FILE WILL SAVED TOO WITH THE BACKUP.

2.2 Create HIC project

In this chapter the projecting of the HomeInformationCenter is shown. This is easy to learn.

2.2.1 Structure of the HomeInformationCenter

The HomeInformationCenter visualization is structured in folders and elements.

A folder can be (for example) the name of a room. In this folders there are the elements. The elements are the KNX components like switches, dimmers and so on. Another possibility is the functional survey. Then the terms like light, heating, blinds, etc. are used as names for the folders.

Menu bar

Instructions to administrate of the HIC visualization.

View

There are the visible at the start of the HIC. They contain a tree structure of folders and elements that can be arranged as you like it.

Folder

The folders are within a view. With these folders you can reproduce tree structures as you like. (folder > subfolder > sub subfolder....> element).

Element

An element has certain characteristics (see element types) and is to be found in a folder. Every element is assigned to a group address to which the element is sending/listening during active using.

2.2.2 HomeInformationCenter Editor

The projecting of the HIC takes place in the editor. For this get connected with the eibPort and open the editor. Choose the window "Home Information Center".

The operation happens via mouse and by the context menu that can be opened by a right click. The mapping of the elements to the folder results as well via mouse with drag & drop.

2.2.2.1 Editor Window

The editor window is combined as it is described in the following passage:

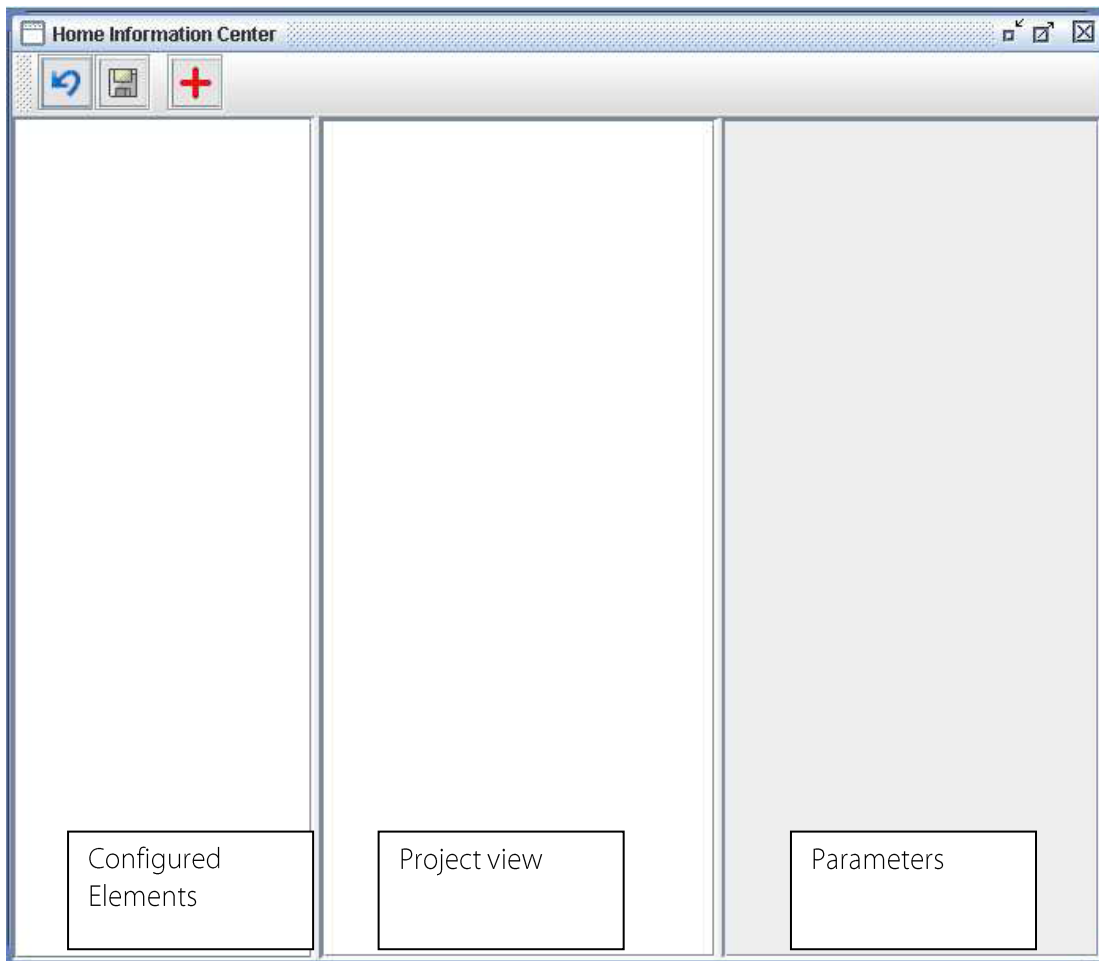


Figure 4 HomeInformationCenter Editor

- menu bar *above*
- configured elements (tree view) *left column*
- project view *middle column*
- parameters *right column*

2.2.2.2 Menu bar

Via the menu bar you can easily reach the following instructions



The current HIC project is load from the eibPort.



Saves the HIC project in the eibPort.



Inserts a new element of the chosen element type into the tree view.

2.2.2.2.1 Element overview

In the element overview all elements are listed according to their type. Via the menu bar or the context menu further elements can be inserted. The mapping of the elements to the folders is done with the mouse via drag & drop.

2.2.2.2.2 Project view

In this column different views and folder structures are shown. Via the menu bar you can insert further views.

2.2.2.2.3 Parameters

Here the parameters and group addresses of the marked element are assigned.

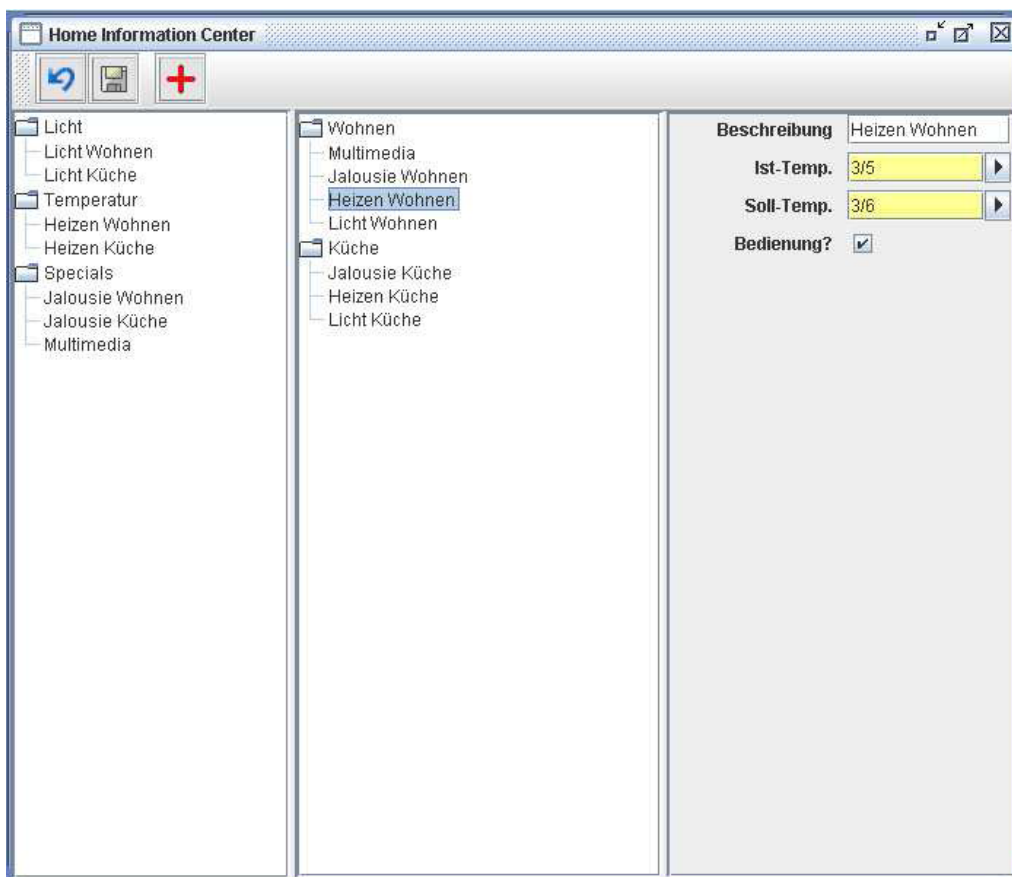


Figure 5 HomelInformationCenter Editor, example Visu

2.2.3 Available element types

- **EIS 1 on/off**
If Handling is activated on/off will be send.If Handling is deactivated this element is used as a indicator lamp.
- **EIS 5 temperature**
This element has an actual- and reference value display, which shows the values of the allocated groupaddresses. If the check box "control" is activated a change of the reference temperature with +/- in 0,5 K steps iis possible.
- **EIS 5 value floating point number**
Shows values with the type of EIS 5. The maximum-, minimum value and the stepwise for can be determined.
- **EIS 6 value 0-100%**
Shows values of type EIS 6. The max-, min value and the stepwise can be determined.
- **EIS14 Wert 0-255**
Shows values with the type of EIS 14. The max-, min value and the the stepwise can be determined.
- **Venetian blinds**
Element to navigate a venetian blind wizh move-, step- and wind alarm object.
- **Camera**
Shows the picture of a network cam. For this the URL for the last stored picture in the camera has to be insert.
- **List**
Element to start playlists (for example SlimServer)
- **Media Control**
Navigates media players that are connected with the system e.g SqueezeCenter

3. Function test

The function and configuration can be controlled very simple in a few steps.

3.1 Start HIC. The HIC start page

The new HomelInformationCenter comes with a start page. This start page can open with every java script enabled browser (PCs and mobile devices). The link to the HIC start page:

<http://<ip-eibPort>/hic/>

This link opens the start page:

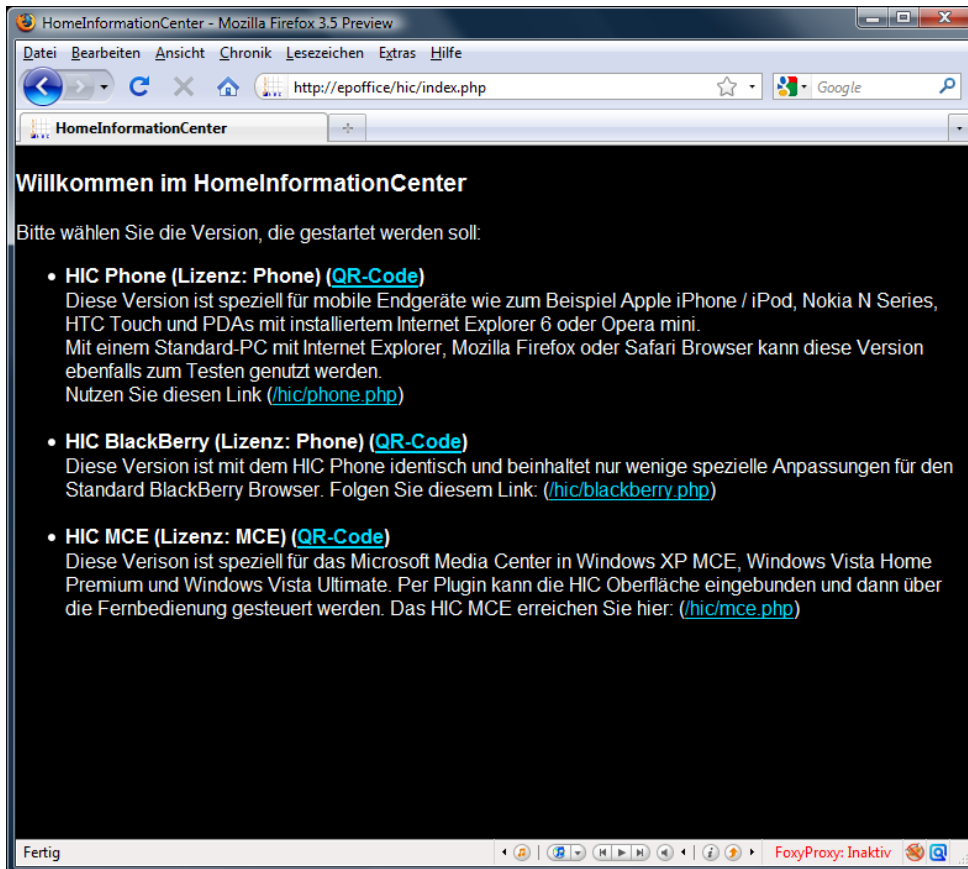


Figure 6 HIC start page

From here the HIC visualization can be open. Three types are available:

- HIC Phone (Apple, Nokia, SonyEricsson, usw.) (Link .../hic/phone.php),
- HIC for BlackBerry (Link .../hic/blackberry.php) und
- HIC MCE (Media Center Edition) (Link .../hic/mce.php)

You find each link in the end of the text block.

TIP:

THIS LINK CAN BE SAVED AS FAVORITE. SO THE VISUALIZATION CAN START WITH ONLY ONE CLICK.

NOTICE:

IF THE VISUALIZATION IS NOT STARTING CHECK THE VERSION OF THE EIBPORT. THE EIBPORT HAS TO CONTAIN VERSION > 0.8.5. IF ITS NOT AN UPDATE HAS TO BE MADE.

TIP:

*If your mobile device are not listed, try the standard visualization **phone**
(<http://<ip eibPort>/hic/phone.php>)*

*If the visualization is not shown, try a alternative web browser. Some devices
are supporting different web browser.*

Example: For Windows mobile edition you can use the Opera web browser.

3.1.1 Start HIC with QR Codes

The eibPort can also generate so called QR codes. The QR codes are images which contains information's. This information's can be read with the camera of your mobile device.

The following two images show two QR codes. The image contain a URL. The left one contains the URL of b.a.b-technologie gmbh and the right one contains the URL to the internet HIC demo visualization. (Try this link, to learn the functionality)

The advantage of the QR code, if it is printed, you can save to type in the URL to the HomelInformationCenter visualization. (Demo, Exhibition, Presentation for new users)



www.bab-tec.de



dmz.bab-tec.de (Online Demo HIC)

The QR codes can be generated with a click on the link **QR Code**. (see Figure 6 HIC start page).

After the click two QR codes will be shown. The first is the QR code of your eibPort with the internal IP-Address. The second one can be edited e.g for your dyndns-address.



b.a.b – technologie gmbh

INHOUSE Dortmund
Rosemeyerstr. 14
44139 Dortmund

info@bab-tec.de

Tel. +49 231 476 425 - 30
Fax.+49 231 476 425 - 59