

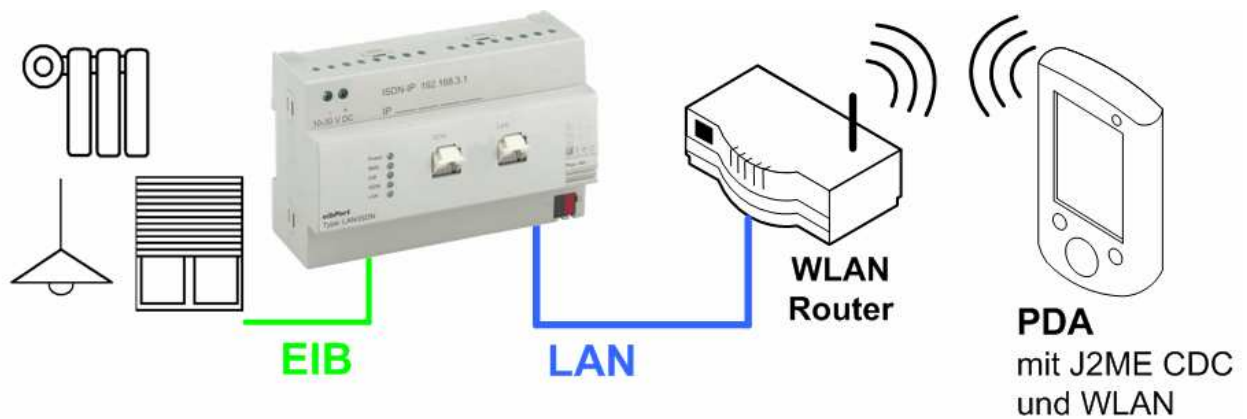
HomeInformationCenter **PDA**

User Guide

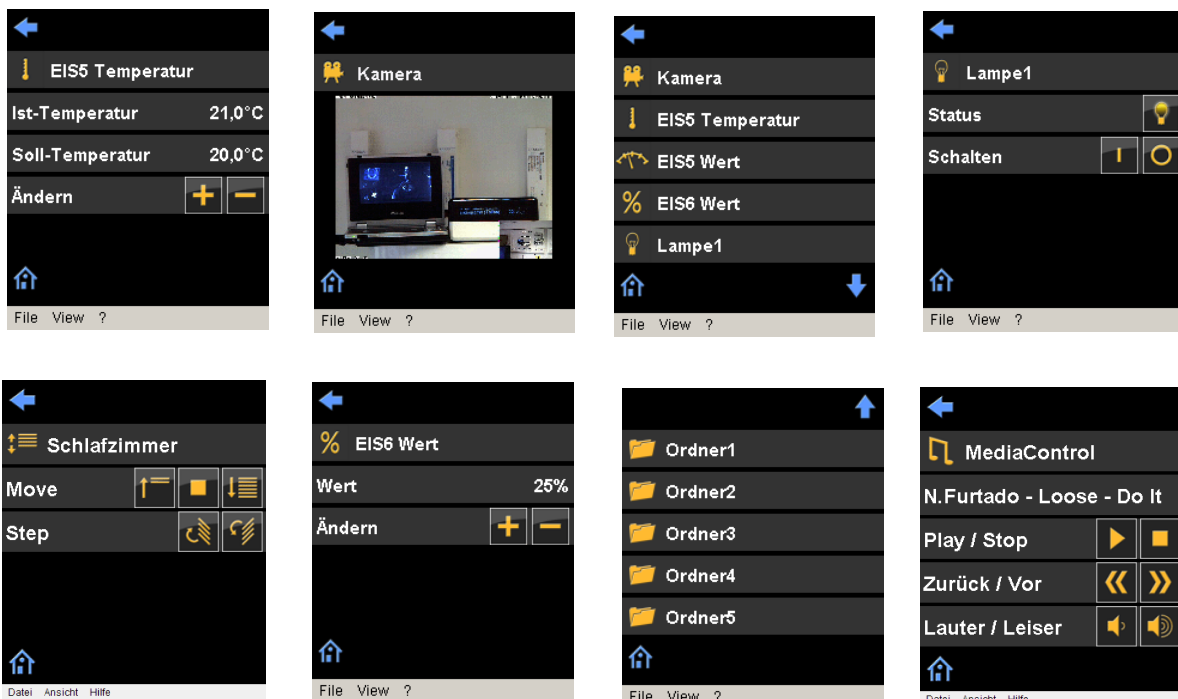
Inhaltsverzeichnis

Overview	3
system requirement:	4
installation steps	Fehler! Textmarke nicht definiert.
1 Installation HIC PDA	5
2 HIC projection	7
2.1 Architecture of Home Information Center	7
2.2 Home Information Center Editor	7
2.2.1 Editor Window	8
2.2.2 Available Elements	10
3 First start of the HIC	11
4 HomeInformationCenter PDA as desktop switch	12
5 licensing	13

Overview



The HomeInformationCenter PDA is the PDA visualisation of the eibPort. You can switch the light, display values and change them, show camera pictures, control the room temperature, the blinds and the music with your PDA. The tabular structure of the visualisation supply clearly all functions of your home automation.



system requirement:

- eibPort with a version >0.7.0
- PDA with J2ME CDC
- MS-Pocket PC 2003 , Mobile 5

Comment J2ME CDC:

The J2ME (Java 2 Micro Edition) is a special JAVA version for mobile devices. The J2ME is available with two different specifications, CDC and CLDC. CLDC is for small devices like mobile phones. CDC runs on the most PDAs, SetTop boxes and so on. For the HIC PDA we choice the J2ME CDC, because it is a smaller version of the normal JAVA VM. Through this the programm can be started on a PC with a standard JAVA VM, too.

The J2ME CDC must be installed on the PDA. The license of the J2ME CDC is sold by handango (see where_to_buy.txt).

1. Installation of the HIC on your PDA

2. Projection of the HomeInformationCenter within the HIC Editor of the eibPort.

3. Configuration of the connection between the eibPort and the PDA

1 Installation HIC PDA

For test purpose the esmetec Jbed CDC Software is also on the CD. Start Installation with double click on your PC. The PDA must be connected with the PC and Active Sync is running.

1) Connect your PDA with your Windows PC. ActiveSync (Win XP) or the Windows Mobile Device Center (Win Vista) must be running.

2) Download the latest HIC PDA version:

<http://www.bab-tec.biz/download/produkte/HIC/HIC.J2ME.1.0.2.zip>

3) Extract the archive to a local directory on your pc and start the Esmertec jbed cdc installation which is in HIC_PDA\Esmertec\jbedcdcforpocketpc2003.exe
The installation should start on your PC and after some time the installation on your PDA should start automatically.

4) After the installation is finished there is a new option in the startmenu of the PDA: Start -> Programs -> Jbed CDC. Please try to start "Primitives Test" in the Examples submenu. You will see some drawing operations which is already in java. The Java VM is now installed and working.

5) Next back to your windows pc: open the an explorer, there is a "Mobile Device" in the in the tree structure which should be your connected PDA. Open this Mobile Device and go to the folder \My Documents.

6) Create a new folder called "java" there. Extract the archive "HIC.J2ME.cdc-1.0.2.zip" from the previous extracted folder to the "java" folder on your PDA.

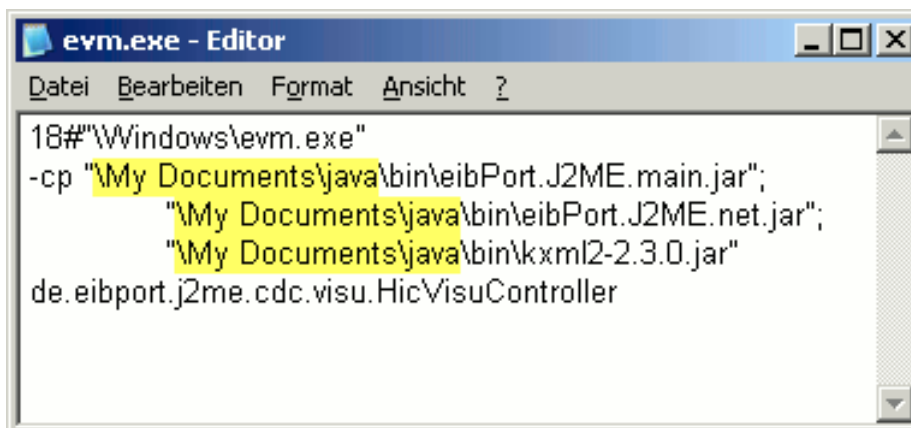
7) Open the File Explorer on your PDA and navigate to \My Documents\java. With a double click on startPDA the esmertec java machine starts and some seconds later HIC PDA is running.

If you don't want HIC to be installed in \My Documents\java follow the instructions in the manual on page 6.

Install HIC-PDA on your PDA in an other folder:

1. Open the files of the folder "HIC_PDA" on your PC (password: eibPort) and unpack them to a folder (you choose) on your PC.
2. Open the file „evm.exe.Ink“ with the text editor (the standard editor of Windows is enough) and fit – if you want- the paths to your PDA.
3. Copy the files from your PC to the PDA.

The standard paths refer to the Esmertec VM under \Windows and the PDA visualization under \My Documents\Java



```

18#\Windows\evm.exe"
-cp "My Documents\java\bin\eibPort.J2ME.main.jar";
    "My Documents\java\bin\eibPort.J2ME.net.jar";
    "My Documents\java\bin\kxml2-2.3.0.jar"
de.eibport.j2me.cdc.visu.HicVisuController
  
```

(the paths are normally in a line).

Save the changes! Now you can start the HIC PDA with a double click on the file „startPDA .Ink“.

2 HIC projection

In this chapter you will see how to create a new project for the Home Information Center. This is fast and easy to learn.

2.1 Architecture of Home Information Center

The Home Information Center editor contains data sources. One contains all configured EIB objects and the other contains the information how the tree structure of the visualization will look.

Element

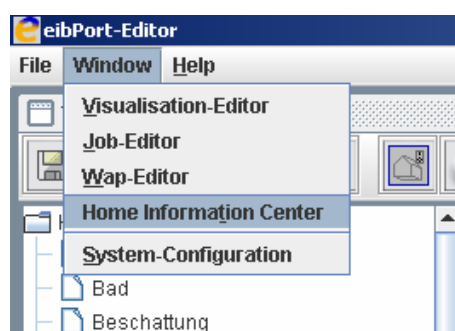
Each element has properties like group address and description and are grouped by categories for a better overview.

Tree structure

The tree structure represents the layout of the visualization. You can add your Elements in folders which may be defined by the structure of the building (for example living room, kitchen...) or in categories (e.g. lights, blinds...)

2.2 Home Information Center Editor

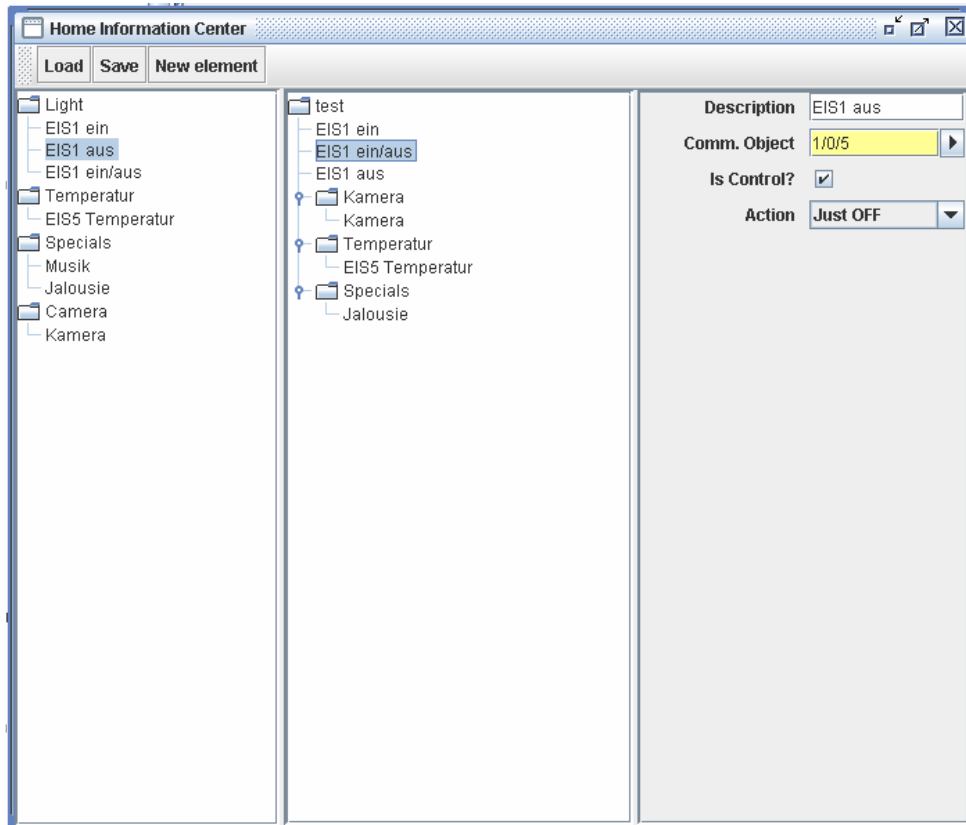
To start the Home Information Center editor, open the eibPort with your browser and click on „Editor“. When the editor has started, choose “Home Information Center” from the menu “Window”. If you have never created a HIC visualization a message will popup, that no project has been found.



You can use the context menu to add new elements and drag& drop to move them into the tree structure or change the tree structure.

2.2.1 Editor Window

The editor window is divided into the following parts:



- Menu bar
- Element overview *left column*
- Tree structure for visualization *center column*
- Parameters *right column*

Menu bar

The Menu bar contains buttons for the following actions:

Load	The project will be loaded from the eibPort.
Save	Saves the whole project into the eibPort.
New element	Gives a selection of the available element types and creates a new element from the chosen type.

Element overview

In the element overview all configured elements are grouped by its type. You can add them either using the menu bar or the context menu by right clicking the element overview.

Tree structure

In this part of the editor contains the folders and references to the elements. It is the structure that will be displayed in the visualization. New folders can be added using the context menu (right click). The folders, elements and references can be placed by drag & drop.

By dragging an element from the element overview into the tree structure you will create a reference to this element. If you change any property from the element, the reference will have this property, too.

Parameters

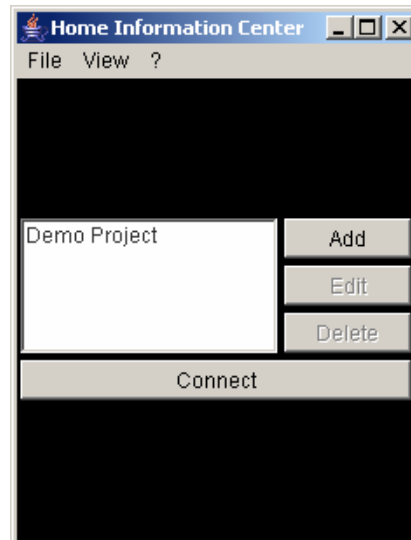
Here all properties for the selected elements are listed.

2.2.2 Available Elements

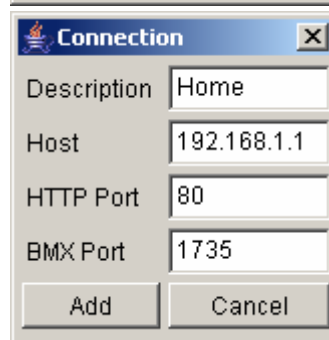
- **EIS 1 on/off**
This element displays the status of an EIS1 device and can send the a new status if „control“ is enabled.
- **EIS 5 Temperatur**
This element displays the current and desired temperature of a temperature sensor. If control is enabled, you can change the desired temperature with the configured step width.
- **EIS 5 value floating point**
Displays EIS5 values. If you have control enabled you have to configure stepsize, maximum and minimum value.
- **EIS 6 value 0-100%**
Displays EIS6 values. If you have control enabled you have to configure step size, maximum and minimum value.
- **EIS14 value 0-255**
Displays EIS14 values. If you have control enabled you have to configure step size, maximum and minimum value.
- **Camera**
Displays an image of a network camera. You have to configure the correct URL to the image.
- **Jalousie**
for the control of shutters and blinds with the functions move, step, stop and wind alarm.
- **MediaControl**
for the control of music, DVD or another device. This element contains the most important functions, play, stop, back, skip and volume.

3 First start of the HIC

After the start of the HIC a connection dialog is displayed.



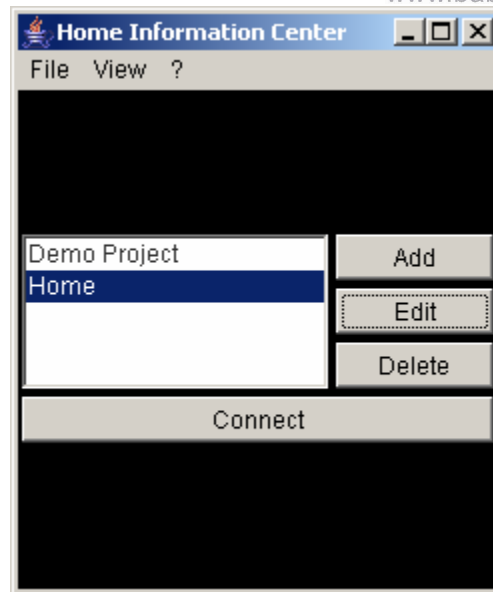
At the first start you have to configure the connection. Click on “Add” and enter the following parameters of the eibPort:



- | | |
|--------------------|--|
| Description | the name of the connection, it will displayed in the connection dialog. |
| Host | enter the IP address of the eibPort. |
| HTTP Port | enter the HTTP port of the eibPort. The default port is 80. You can see it in the ConfigTool of your eibPort |
| BMX Port | enter the BMX port of your eibPort. The default port is 1735. You can see it in the ConfigTool of your eibPort |

You have to click on „Add“ to save the parameters.

With the button „*Edit*“ you can change the connection parameters. The button „Delete“ deletes the connection parameters of the selected connection.



From this time on you only have to select the connection and click on the button “Connect”. The HIC PDA will connect the eibPort and the visualisation starts.

Note: To close the HIC PDA use the menu! Click on File > close. If you use the “X”, the HIC will be closed, but the Esmertec VM will still run.

4 HomeInformationCenter PDA as desktop switch

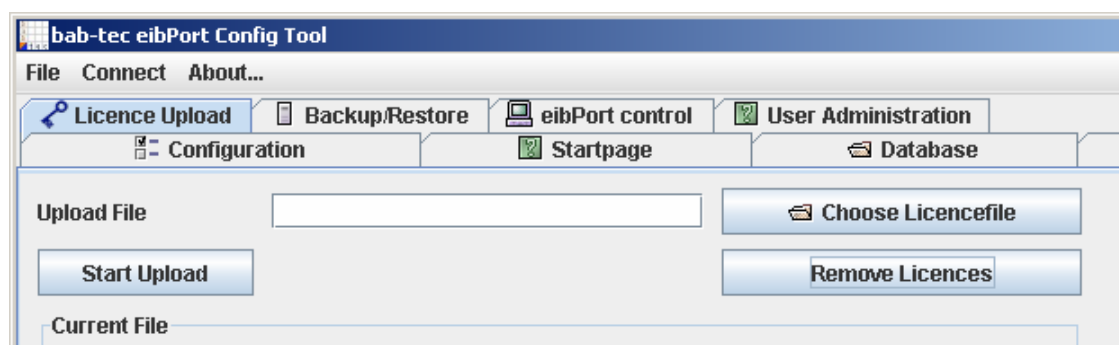
The HomeInformationCenter PDA runs on every PC with a JAVA VM. If you want to use the HIC PDA on a PC, you have to unpack the folder on your PC and make a double click on the file “start.bat”. The HIC PDA works in the same way.

5 licensing

The use of the HomeInformationCenters is bound to a licence. You get these at the acquisition of the HomeInformationCenters in the form of a file (file ending .dat). This licence file must be loaded into the eibPort.

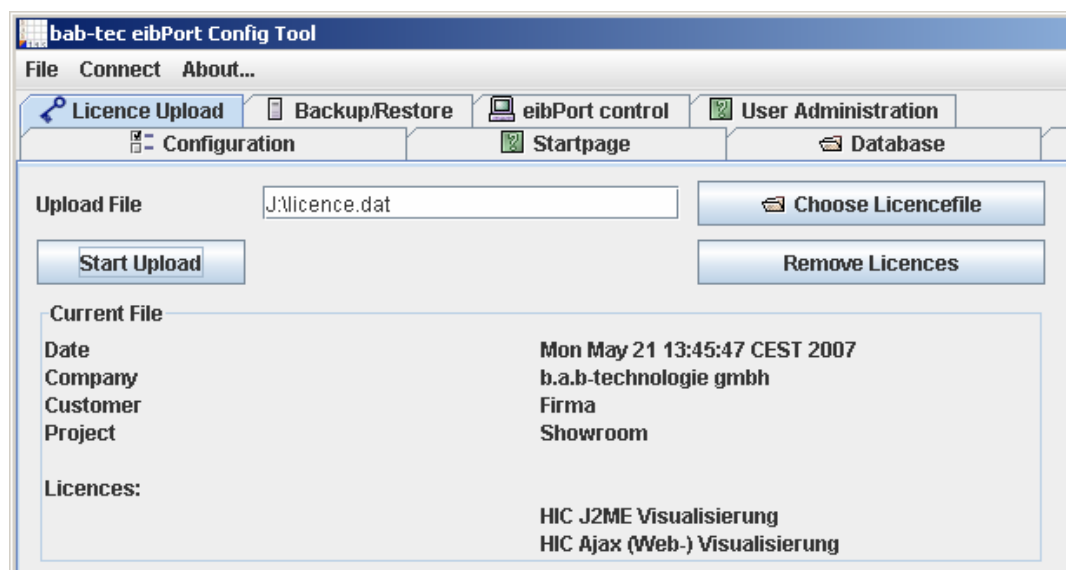
Execute the following steps:

1. Connect the eibPort
2. Start the ConfigTool - to this you need the string of the eibPorts as well as user name and password
3. Click on the rider licence upload - the following mask is shown.



4. Choose the path of the licence file and start the upload.

The licence will be shown.



The licensing is completed, you can leave the ConfigTool.



b.a.b-technologie GmbH
Rosemeyerstraße 14
44139 Unna
Tel.Nr.: +49 231 / 476 425-30
Fax.Nr.: +49 231 / 476 425-59
E-Mail: info@bab-tec.de
Internet: www.bab-tec.de