

eibPort Touch



Thin-Frame Panel PC Series are Pentium-based open frame Panel PCs designed to function as a Man-Machine-Interface for easy integration. The rear mount thin- frame configuration is the marvellous cost effective solution. With 3,5cm depth, is

thus suitable for the installation into space-constricted environment (e.g. timber panel installation, Mirror assembly) Due to its small power consumption (10 W-30 W) it can be built -with optional accessories- also into the wall.

As a Visualisation Client for eibPort the devices can be referred in three software variants

Type A:

Linux (with Java) is installed on 256 MB FC. After switching on the Panel starts automatically the Browser and Java VM. Optional in Kioskmode.

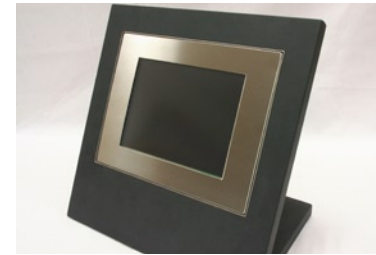
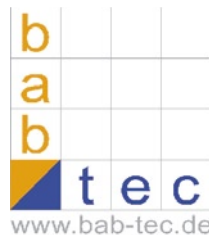
Type B:

Windows CE is installed. The Touch Panel is working as a remote Desktop in connection with a Windows Server. The Server is connected to eibPort.

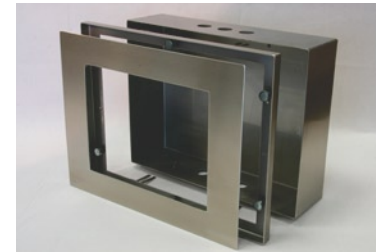
Type C:

Embedded XP on 2 GB Flash Card.

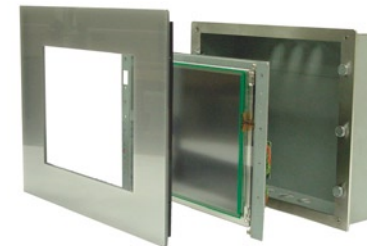
Add On for
eibPort



Einbaukit Edelstahl



Einbaukit Acrylrahmen



Aufputz nur 6 cm tief



Technische Daten:

Panel-PC with Touch 10,4" oder 15" color TFT LCD

Embedded 3.5 CPU board

CPU Low Voltage CPU-533 MHz

Memory SDRAM 256 MB Onboard

Network 10/100 Base-T Ethernet Port,

Realtek 8100B

I/O ports 4 COM ports

1 Parallel port

1 FDD port

1 PS/2 Mouse & KB port

1 Mic-in, Line-in, Line-out

1 USB port (USB Version 1.1)

Extension: PC/104 x 1; X-PCI x 1

Display :

Color 262K

Type 8.4", 10.4" SVGA (800*600)

Type 15" XVGA (1024*768)

Touch Panel:

Type (Zoll)	Artikel-Nr.:
-------------	--------------

10,4"	04310
-------	-------

15"	04315
-----	-------

15" AP mit XP Pro	04415
-------------------	-------

15" color TFT LCD Aufputz

Intel Celeron 1G Fanless

386x308x60 mm BxHxD

Resolution 1024x768

XP Professional on 2 GB FC

512 MB DDRAM onboard

b.a.b-technologie GmbH

Heinrich-Hertz-Straße 4

59423 Unna

Telefon: 0049 23 03 - 25 30 1-0

Telefax: 0049 23 03 - 25 30 1-490

Internet: www.bab-tec.de

E-Mail: info@bab-tec.de